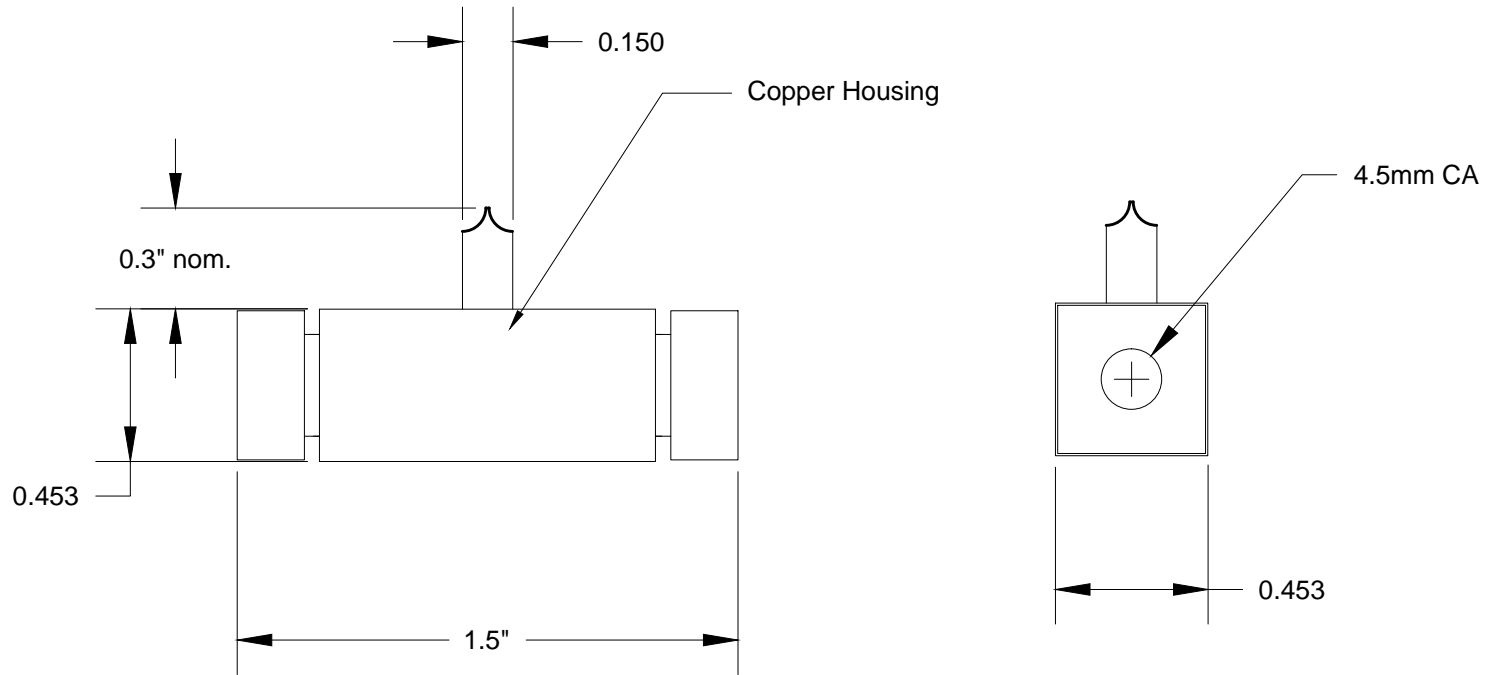


Free-space Copper Cell:
 4.5mm clear aperture; 2.7cm path length



| | |
|---------------|---|
| HF Tube | Wavelength References Inc. |
| Scale 1:x | 1 Inch Copper Assembly Drawing |
| Jeremy Colson | Dimensions in inches unless noted otherwise |
| 2/01/2011 | Revision 1.0 |